

WARDEN



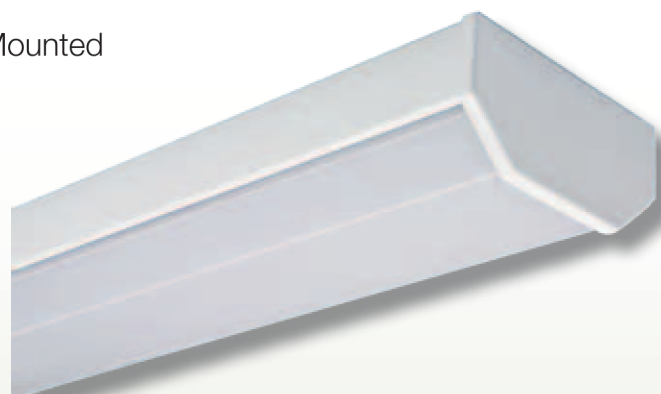
(STANDARD CELLULAR) ANTI LIGATURE SURFACE RANGE



*NOMS STD/E/SPEC021 Standard Cellular Accommodation

Anti Ligature Note: When correctly installed against ceiling, using 'Anti Pick' Mastic.

- IP40 – IK10 ++
- Fully Welded Fabricated Steel Body, Ceiling Mounted
- Night Light option
- Ceiling Mounted
- Removable High Frequency Gear Tray
- Opal or Prismatic Polycarbonate Diffuser
- Microwave Motion Detection option
- Longlife 50,000 hrs Fluorescent options
- LED Option



DESCRIPTION

Robust constructed body with internal removable gear tray. Diffuser held captive by one secure end cap & one removable end which enables the diffuser to be withdrawn from one end (ensure sufficient clearance between luminaire & wall).

APPLICATION

For use in 'Standard Cell' and sensitive areas, Police Stations, HMP Prisons, Detention Areas, Psychiatric Hospitals etc.

RANGE AVAILABLE

Catalogue No.	Description	Length (mm)	Weight (Kg)	Dimensions
WRN214	2x14w/HF/T5	2ft/ 600mm	6 Kg	
WRN128	1x28w/HF/T5	4ft/ 1200mm	8 Kg	
WRN154	1x54w/HF/T5	4ft /1200mm	8 Kg	
WRN135	1x35w/HF/T5	5ft /1500mm	10 Kg	
WRN149	1x49w/HF/T5	5ft /1500mm	10 Kg	
WRN214	2x14w/HF/T5	2ft / 600mm	6 Kg	
WRN228	2x28w/HF/T5	4ft /1200mm	8 Kg	
WRN254	2x54w/HF/T5	4ft /1200mm	8 Kg	
WRN235	2x35w/HF/T5	5ft /1500mm	10 Kg	
WRN249	2x49w/HF/T5	5ft /1500mm	10 Kg	

*WRN 239/7 2x39/1x7w/HF/T5/NL 3ft /945mm 7 Kg (Standard Cellular Accommodation)

LED Versions (Please refer to website for current technical specification)

Wattage p/mtr	No LED's	Voltage	Lms	Weight (Kg)
(Compromising of 10 qty x 100mm sections of 2.3w)				
WRN23wLED	60	24v	24v/240v	2100 } per lampway

Various T5/T8 type LED Tubes on request
Available in colour temp 3000/4000/5000k

Suffix

/P	Prismatic Polycarbonate Diffuser
/O	Opal Polycarbonate Diffuser
/HFD	High Frequency Dimmable
/EM3	Integral 3 Maintained Emergency
/NL	Night Light
SD	Security Driver
/M-Wave	Microwave Motion Detection option
/LIFE	Long Life Fluorescent option

