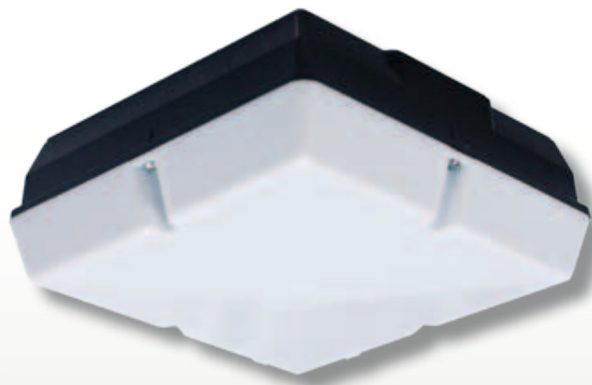


MAYFAIR SQUARE

AMENITY LIGHTING



- IP65 – IK10
- Polycarbonate Body & Diffuser
- Wall, Ceiling or Recessed Mount
- Removable Hinged High Frequency Gear Tray
- Opal or Prismatic Diffuser
- White or Black Base
- Microwave Motion Detection option
- Longlife 50,000 hrs Fluorescent options
- LED Options



DESCRIPTION

All polycarbonate enclosure fitted with Pozi – drive diffuser fixing screws as standard. Torx security screws optional. Facility for side entry conduit. Semi – Recess Kit available as optional extra.

APPLICATION

Amenity areas, Lobbies, Corridors, Store Rooms, General Areas.

RANGE AVAILABLE

Catalogue No.	Description	Weight (Kg)	Dimensions
MAYS162D	16w 2D HF TC-DD	1.5 Kg	
MAYS282D	28w 2D HF TC-DD	1.5 Kg	
MAYS382D	38w 2D HF TC-DD	1.5 Kg	

LED Versions (Please refer to website for current technical specification)

Wattage	No LED's	mA	Lms	Weight (Kg)
MAYS11wLED	60	350	1000	1.5 Kg
MAYS16wLED	60	500	1500	1.5 Kg
MAYS23wLED	60	700	2100	1.5 Kg

note EM3 version c/w 4 x 1w LED
Available in colour temp 3000/4000/5000K

Suffix

/W	White Body
/B	Black Body
/P	Prismatic Controller
/O	Opal Diffuser
/PC	Integral Photocell
/SS	Fitted with Security Screws
/SD	Security Screwdriver
/EM3	3 hour Integral Emergency – (excluding 38w 2D)
/RC-KIT	Semi - Recess Kit cut out 265mm x 265mm
/M-Wave	Microwave Motion Detection option
/LIFE	Long Life Fluorescent option

* Eyelid option on request

