

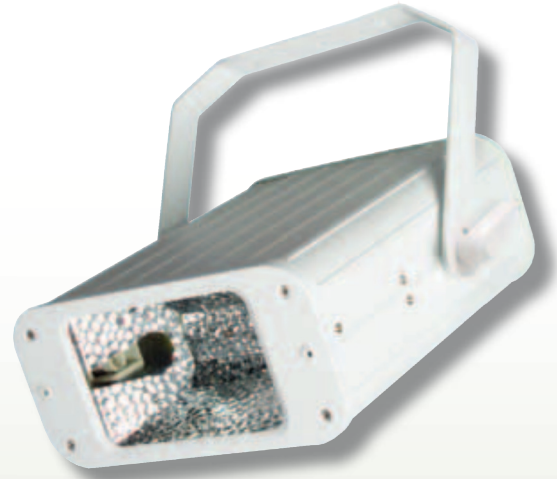


LASER SURFACE

INTERIOR LIGHTING RANGE



- IP20
- Die cast Aluminium Enclosures
- Integral Control Gear
- Double Ended RX7 Metal Halide Lamps
- Surface Mount bracket
- White Metal Work
- Double Ended RX7s Metal Halide
- Coloured Lamp Option



DESCRIPTION

Compact die cast aluminium floodlights for interior applications.

APPLICATION

Showrooms, Shops, Churches, Atrium's etc

RANGE AVAILABLE

| Catalogue No. | Description | Dimensions |
|----------------------|--------------------|-------------------|
| LSR70 | 70w MH HQL-TS | |
| LSR150 | 150w MH HQL-TS | |

*Colour lamp option in blue, green, magenta, orange light sources

