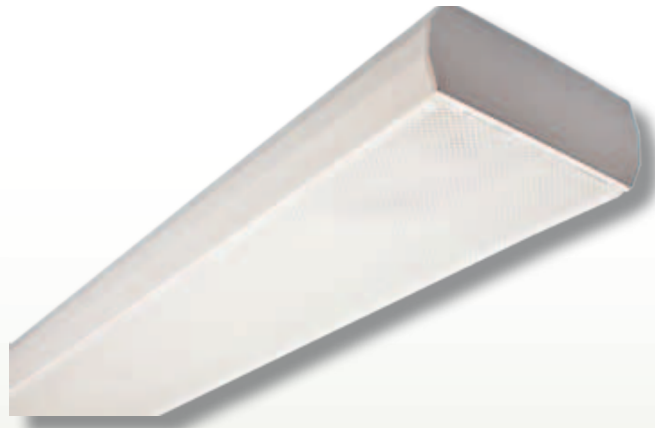


ETON PRISMATIC

SURFACE RANGE



- IP44
- White Steel Body
- Moulded Plastic End Cap
- Lift & Tilt Clear Stippled Polycarbonate Panel
- High Frequency Control Gear
- Microwave Motion Detection option
- Longlife 50,000 hrs Fluorescent options
- LED Option



DESCRIPTION

A range of decorative surface or suspended luminaires. Fabricated quality steel body, moulded end cap. Lift & tilt polycarbonate panel. LED version on request & long life fluorescent options.

APPLICATION

Offices, Foyers, Corridors, Classrooms, Hospitals, Dining Areas etc

RANGE AVAILABLE

Catalogue No.	Description	Dimension (mm)	Weight (Kg)	Dimensions
ETNP128	1x28w HF T5	4ft/1250mm	5.5 Kg	
ETNP154	1x54w HF T5	4ft/1250mm	5.5 Kg	
ETNP135	1x35w HF T5	5ft/1550mm	6.5 Kg	
ETNP149	1x49w HF T5	5ft/1550mm	6.5 Kg	
ETNP228	2x28w HF T5	4ft/1250mm	5.5 Kg	
ETNP254	2x54w HF T5	4ft/1250mm	5.5 kg	
ETNP235	2x35w HF T5	5ft/1550mm	6.5 Kg	
ETNP249	2x49w HF T5	5ft/1550mm	6.5 Kg	

LED Versions (Please refer to website for current technical specification)

Wattage p/mtr	No LED's	Voltage	Lms	Weight (Kg)
(Compromising of 10 qty x 100mm sections of 2.3w) ETNP23wLED	60	24v/240v	2100 } per lampway	6.5 Kg

Various T5/T8 type LED Tubes on request
Available in colour temp 3000/4000/5000k

Suffix

/P	Clear Stippled Diffuser
/O	Opal Diffuser
/HFD	High Frequency Dimmable Control Gear
/EM3	3 hour Maintained Emergency
/M-Wave	Microwave Motion Detection option
/LIFE	Long Life Fluorescent option

