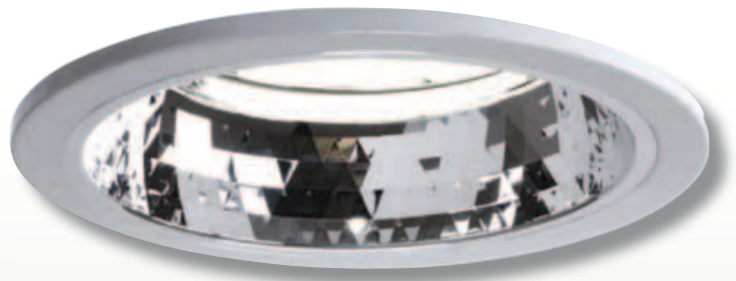


# ENERGY LARGE

## RECESSED DOWNLIGHT RANGE



- IP20/44/65
- Fabricated Metal Body
- Highly Polished Reflector
- Selection of Attachments
- High Frequency Control Gear
- Complete with Plug & Socket
- Adjustable Side Arm Bracket
- Longlife 50,000 hrs Fluorescent Lamps
- LED Option



### **DESCRIPTION**

General purpose recessed downlight range with white metal work as standard. LED & longlife fluorescent options.

### **APPLICATION**

Offices, Corridors, Foyers, Restaurants, Shopping Malls, Showrooms etc

### **RANGE AVAILABLE**

Catalogue No.	Description	Dimensions
NRGL232	2x32w HF TC-TEL	
NRGL242	2x42w HF TC-TEL	

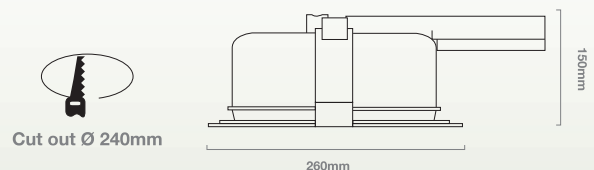
**LED Versions** (Please refer to website for current technical specification)

Wattage	No LED's	mA	Lms	Weight (Kg)
NRG23wLED	24	700	2500	1.8 Kg
NRG24wLED/HO	24	500	2900	1.8 Kg
NRG48wLED/HO	24	1400	4800	1.8 Kg

Available in colour temp 3000/4000/5000K  
Note EM3 version c/w 4 x 1 Watt LED

**Suffix (see attachments opposite page)**

/EM3                      3 hour Remote Maintained Emergency  
/LIFE                      LongLife Fluorescent option



# ENERGY LARGE ACCESSORIES

## NRGL ACCESSORIES



### Bezel Attachment

LCB	Chrome Large	0.1 Kg
LGB	Gold Large	0.1 Kg
LSB	Steel Large	0.1 Kg



### CAT 2 Attachment

LC2	Large CAT 2	0.1 Kg
-----	-------------	--------



### IP 44 Attachment

L44C	Large Clear	0.1 Kg
L44F	Large Frosted	0.1 Kg



### IP 65 Attachment

L65	Large IP65	0.6 Kg
-----	------------	--------



### Clear Full Disc Attachment

LFC1	Large Solid Clear	0.4 Kg
------	-------------------	--------



### Frosted Full Disc Attachment

LFC2	Large Solid Frosted	0.4 Kg
------	---------------------	--------



### Floating Ring Attachment

LFR1	Large Frosted Outer	0.2 Kg
------	---------------------	--------



### Wallwasher Attachment

LA	Large Wallwash	0.1 Kg
----	----------------	--------